

**SULZER**

Massblatt XFP 100E-CP Nassinstallation  
 Dimension sheet WET-WELL Installation  
 Dimensioni Installazione sommersa  
 Hoja de dimensiones instalación sumergida  
 Plan d'encombrement Installation noyee

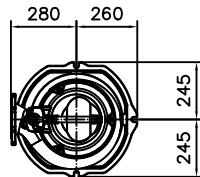
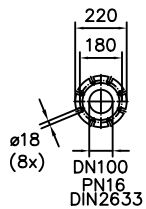
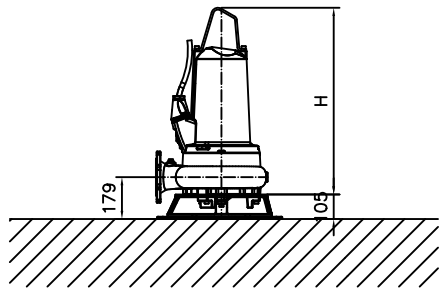
No: AN-M.22.675 - 03  
 Drawn: 24.06.11 / D.Wheelan  
 Issue Date: 01/06/2016  
 Änderungen vorbehalten  
 Technical changes reserved  
 Con riserva di modifiche  
 Con reserva de modificaciones  
 Sous réserve de modification

**50 Hz****S.I.**

Typ Type Tipo	Gewicht Weight Poids Peso (kg)	H (mm)
PE 60/4	181	728
PE 90/4	201	798

**60 Hz**

Typ Type Tipo	Gewicht Weight Poids Peso (kg)	H (mm)
PE 35/6	172	728
PE 75/4	181	728
PE 105/4	201	798



Gewicht: Beinhaltet Pumpe, Bodenstutzgestell und Kabel (50Hz = 10m; 60Hz = 15m)  
 Weight: includes pump, skirbase and cable (50Hz = 10m; 60Hz = 15m)  
 Peso: incluye bomba, base soporte y cable (50Hz = 10m; 60Hz = 15m)  
 Peso: include: pompa, base d'appoggio e cavo (50Hz = 10m; 60Hz = 15m)  
 Poids: incluant la pompe, le trepied et le cable (50Hz = 10m; 60Hz = 15m)

Guss-Allgemeintoleranzen nach DIN1680 - GTB16  
 General tolerances for castings in acc. to DIN1680-GTB16  
 Tolleranze generali delle fusioni secondo DIN1680-GTB16  
 Tolerancias generales para la fundición seg. de DIN1680-GTB16  
 Tolérance générale de la fonderie selon DIN1680-GTB16

**SULZER**

Massblatt XFP 100E-CP Nassinstallation  
 Dimension sheet WET-WELL Installation  
 Dimensioni Installazione sommersa  
 Hoja de dimensiones instalación sumergida  
 Plan d'encombrement Installation noyee

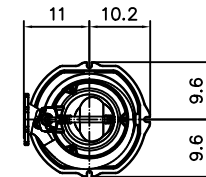
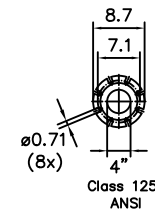
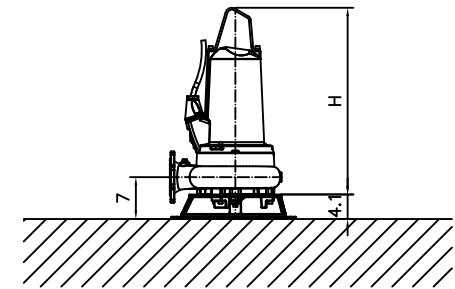
No: AN-M.22.675 - 03  
 Drawn: 24.06.11 / D.Wheelan  
 Issue Date: 01/06/2016  
 Änderungen vorbehalten  
 Technical changes reserved  
 Con riserva di modifiche  
 Con reserva de modificaciones  
 Sous réserve de modification

**50 Hz****U.S.**

Typ Type Tipo	Gewicht Weight Poids Peso (lbs)	H (")
PE 60/4	400	28.7
PE 90/4	444	31.4

**60 Hz**

Typ Type Tipo	Gewicht Weight Poids Peso (lbs)	H (")
PE 35/6	379	28.7
PE 75/4	400	28.7
PE 105/4	444	31.4



Gewicht: Beinhaltet Pumpe, Bodenstutzgestell und Kabel (50Hz = 10m; 60Hz = 15m)  
 Weight: includes pump, skirbase and cable (50Hz = 10m; 60Hz = 15m)  
 Peso: incluye bomba, base soporte y cable (50Hz = 10m; 60Hz = 15m)  
 Peso: include: pompa, base d'appoggio e cavo (50Hz = 10m; 60Hz = 15m)  
 Poids: incluant la pompe, le trepied et le cable (50Hz = 10m; 60Hz = 15m)

Guss-Allgemeintoleranzen nach DIN1680 - GTB16  
 General tolerances for castings in acc. to DIN1680-GTB16  
 Tolleranze generali delle fusioni secondo DIN1680-GTB16  
 Tolerancias generales para la fundición seg. de DIN1680-GTB16  
 Tolérance générale de la fonderie selon DIN1680-GTB16