


SPARE PARTS LIST/ERSATZTEILLISTE/LISTE DE PIÈCES DE RECHANGE
AS 1030 S25/4 60Hz Std. & FM

Valid from Serial Number: 100 -

Page :
 Issue of : 20/10/11
 Supersedes Issue :
 Issue No. : 01,02
 Drawing ref. Nr. : ANS12090-00

Pos. No.	Part No.	Kit	Qty	Description	Benennung	Designation	Dimensions /Din	Comments	Price
1	31005034		1	Motorhousing	Motorgehäuse	Carcasse moteur			
2	11120468	AB	1	O-ring	O-ring	Joint torique	47X3 DIN 3770	Viton	
3	43025563		1	Cable	Kabel	Cable	4x1.5 Tecwater	10m	
3	43025569		1	Cable	Kabel	Cable	4x1.5 Tecwater	20m	
3	43025657		1	Cable	Kabel	Cable	4x1.5 Tecwater	30m	
3	43025535		1	Cable	Kabel	Cable	7x1.5 Tecwater	10m	
3	43025536		1	Cable	Kabel	Cable	7x1.5 Tecwater	20m	
3	43025537		1	Cable	Kabel	Cable	7x1.5 Tecwater	30m	
3	43025203		1	Cable	Kabel	Cable	14/7 SOW-A	10m	
3	43025212		1	Cable	Kabel	Cable	14/7 SOW-A	20m	
3	43025220		1	Cable	Kabel	Cable	14/7 SOW-A	30m	
4	31325008		1	Cable cap	Kabeleinführung	Entree de cable	GG25 (Ø12)	Cable 4x1.5	
4	31320140		1	Cable cap	Kabeleinführung	Entree de cable	GG25 (Ø20)	Cable 4x1.5+3x0.5 Cable 7x1.5 Cable 14/7	
5	42015009		2	Washer	Scheibe	Rondelle	Ø34x18x1.5	Cable 4x1.5 Cable 4x1.5+3x0.5 Cable 7X1.5	
5	42015005		2	Washer	Scheibe	Rondelle	34x19.5x1.5	Cable SOW-A 14/7	
6	11210243		4	Cylinder screw	Zylinderschraube	Vis à tête cylindrique	M8x25 DIN 912		
7	11530017		4	Spring washer	Federring	Rondelle	M8 Din 7980		
8	43075058	A	1	Cable seal	Kabeldichtung	Joint de kabel	Ø34x11.5x29.5H	Cable 4x1.5	
8	43075056	B	1	Cable seal	Kabeldichtung	Joint de kabel	Ø34x11.5x29.5H (viton)	Cable 4x1.5	
8	43075048	A	1	Cable seal	Kabeldichtung	Joint de kabel	Ø34x16x29.5H	Cable 4x1.5+3x0.5 Cable 7x1.5 SO7RN-F OZ+	
8	43075057	B	1	Cable seal	Kabeldichtung	Joint de kabel	Ø34x16x29.5H (viton)	Cable 4x1.5+3x0.5 Cable 7x1.5 SO7RN-F OZ+	
8	43075049	A	1	Cable seal	Kabeldichtung	Joint de kabel	Ø34x16.8x29.5H	Cable 7x1.5 TL07RN-F	
8	43075028	A	1	Cable seal	Kabeldichtung	Joint de kabel	Ø34x13.8x29.5H	Cable 7x1.5 Tecwater	
8	43075068	B	1	Cable seal	Kabeldichtung	Joint de kabel	Ø34x16.8x29.5H (Viton)	Cable 7x1.5 TL07RN-F	
8	43075034	B	1	Cable seal	Kabeldichtung	Joint de kabel	Ø34x13.8x29.5H (Viton)	Cable 7x1.5 Tecwater	
8	43075029	A	1	Cable seal	Kabeldichtung	Joint de kabel	Ø34x18x29.5H	Cable SOW-A 14/7	
8	43075035	B	1	Cable seal	Kabeldichtung	Joint de kabel	Ø34x18x29.5H (viton)	Cable SOW-A 14/7	
9	12180044		4	Butt connector	St.verbinder	Connecteur			
10	11060006		1	Support Washer	Tragscheibe	Rondelle	25X35X2 Din 988		
11	11020006		1	Ball bearing	Kugellager	Roulement à billes	3205 B. DIN 628		
12	11120817	A	1	O-ring	O-ring	Joint torique	159X3 DIN 3771		
12	11120870	B	1	O-ring	O-ring	Joint torique	160X3 DIN 3771	Viton	
13	11080010		1	Circlip	Sicherungsring	Circlip	Ø52x2.0 DIN 472		
14	11110001		1	Mechanical seal	Gleitringdichtung	Garniture mecanique	20mm		
14	11110149		1	Mechanical seal	Gleitringdichtung	Garniture mecanique	20mm	Viton	
15	11470072		1	Washer	Scheibe	Rondelle	Ø8.4 DIN 9021		


SPARE PARTS LIST/ERSATZTEILLISTE/LISTE DE PIÈCES DE RECHANGE
AS 1030 S25/4 60Hz Std. & FM

Valid from Serial Number: 100 -

Page :
 Issue of : 20/10/11
 Supersedes Issue :
 Issue No. : 01,02
 Drawing ref. Nr. : ANS12090-00

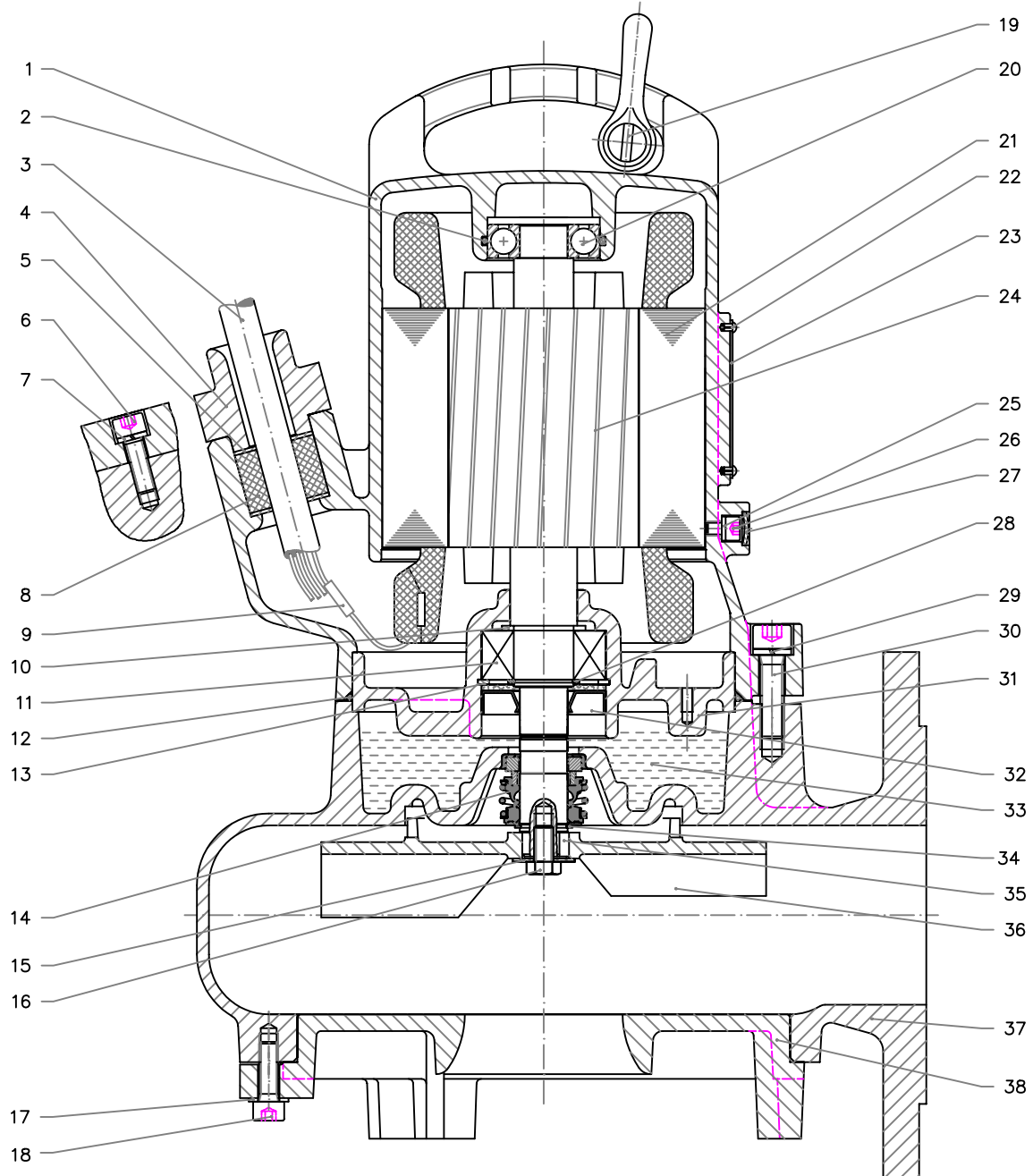
Pos. No.	Part No.	Kit	Qty	Description	Benennung	Designation	Dimensions /Din	Comments	Price
16	11200230		1	Cylinder screw	Zylinderschraube	Vis à tête cylindrique	M8x16 DIN 933		
17	11470072		3	Washer	Scheibe	Rondelle	Ø8.4 DIN 9021		
18	11210243		3	Cylinder screw	Zylinderschraube	Vis à tête cylindrique	M8x25 DIN 912		
19	14990008		1	Shackle	Schäkel	Manille			
20	11010017		1	Ball bearing	Kugellager	Roulement à billes	6204 ZR.C3 DIN 625		
21	65005502		1	Stator	Wicklung	Stator	208/3/60		
21	65005525		1	Stator	Wicklung	Stator	230/3/60		
21	65005505		1	Stator	Wicklung	Stator	380/3/60		
21	65005500		1	Stator	Wicklung	Stator	460/3/60		
21	65005501		1	Stator	Wicklung	Stator	575/3/60		
22				Not available	nicht lieferbar	pas disponible			
23				Not available	nicht lieferbar	pas disponible			
23				Not available	nicht lieferbar	pas disponible			
24	65015084		1	Rotor with shaft	Rotor mit Welle	Rotor avec arbre	1.4021		
24	65015085		1	Rotor with shaft	Rotor mit Welle	Rotor avec arbre	1.4401		
25	11130003	AB	1	Seal ring	Dichtung	Rondelle joint	6x10 DIN 7603		
26	11210253		1	Cylinder screw	Zylinderschraube	Vis à tête cylindrique	M6x10 DIN 912		
27	11490020	AB	1	Seal washer	Verschlußscheibe	Rondelle joint	DIN 470		
28	11070007		1	Circlip	Sicherungsring	Circlip	Ø25X1.2 Din 471		
29	11530018		3	Spring washer	Federring	Rondelle	M10 Din 7980		
30	11210251		3	Cylinder screw	Zylinderschraube	Vis à tête cylindrique	M10X50 DIN912		
31	31155024		1	Bearing lid	Lager deckel	Couvercle palier	GG20		
31	31155036		1	Bearing lid	Lager deckel	Couvercle palier	GG20	DI probe Std. EU/USA	
31	31155026		1	Bearing lid	Lager deckel	Couvercle palier	GG20	With FM DI-probe	
32	11090009	AB	1	Lip seal	Wellendichtung	Joint à levres	20X52X10 DIN 3760		
33	11030046		0.56	Oil	Öl	Huile			
34	11070005		1	Circlip	Sicherungsring	Circlip	Ø20X1.2 DIN 471		
35	11630128		1	Impeller key	Paßfeder	Clavette	6x6x10 DIN 6885		
36	35075123		1	Impeller	Lauftrad	Roue	Ø175		
37	31055062		1	Volute	Kreiselmammer	Corps de pompe			
38	31060585		1	Bottom plate	Bodenplatte	Plaque de base			
38	31065021		1	Bottom plate	Bodenplatte	Plaque de base		FHA	
39	11650001	AB	1	Seal washer	Verschlußscheibe	Rondelle joint	M8		
40	11260100		1	Cylinder screw	Zylinderschraube	Vis à tête cylindrique	M8X10 Din85		
41	11260104		1	Cylinder screw	Zylinderschraube	Vis à tête cylindrique	M5X10 DIN 85		
42	11500003		1	Locking washer	Klemmscheibe	Rondelle-frein			
43	12180014		1	Cable shoe	Flachsteckhülse	Cosse-câble			
44				Not available	nicht lieferbar	pas disponible			
45				Not available	nicht lieferbar	pas disponible			
46				Not available	nicht lieferbar	pas disponible			
47				Not available	nicht lieferbar	pas disponible			
48				Not available	nicht lieferbar	pas disponible			


SPARE PARTS LIST/ERSATZTEILLISTE/LISTE DE PIÈCES DE RECHANGE
AS 1030 S25/4 60Hz Std. & FM

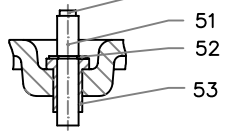
Valid from Serial Number: 100 -

 Page :
 Issue of : 20/10/11
 Supersedes Issue :
 Issue No. : 01,02
 Drawing ref. Nr. : ANS12090-00

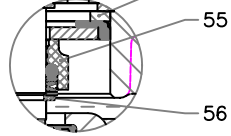
Pos. No.	Part No.	Kit	Qty	Description	Benennung	Designation	Dimensions /Din	Comments	Price
49	12120241		1	DI-probe	DI-electrode	Sonde DI			
50	12180144		1	Round plug	Rundstecker	Fiche rond			
51	42135000		1	DI-probe	DI-electrode	Sonde DI			
52	11080027		1	Circlip	Sicherungsscheibe	Circlip	Ø7 DIN 6799		
53	43070326		1	Seal for DI	Dichtung für DI	Joint pour DI			
54	11060014		1	Support Washer	Tragscheibe	Rondelle	42X52X2.5 Din 988		
55	11100066		1	Mechanical seal	Gleitringdichtung	Garniture mecanique	20mm		
56	11070006		1	Circlip	Sicherungsring	Circlip	Ø20X1.2 Din 471		
	61195073	A	1	Seal kit	Dichtungssatz	Jeu de joint complet			
	61195077	B	1	Seal kit	Dichtungssatz	Jeu de joint complet	Viton		



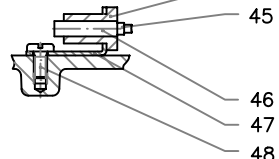
DI (OPTIONAL)
Std. Euro/USA



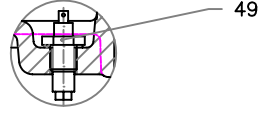
2nd Mech. seal



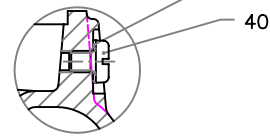
DI (OPTIONAL)
EX EECS



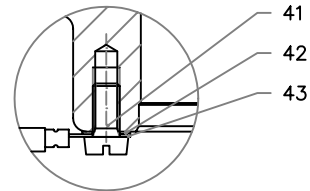
DI (OPTIONAL)
FM



OIL SCREW



EARTH CONNECTION



SULZER	SPARE PARTS LIST / ERSATZTEILLISTE LIST DE PIÉCES DE RECHANGE	AN-S 12.90 -00
	AS1030 M22-4 (50Hz) AS1030 M25-4 (60Hz)	CAD CODE: G:\DWG\AS12090
		13.01.00 C.QUIRKE
		Technical changes reserved *änderungen vorbehalten Sans réserve de modification
	Product Center: IEM	