

Los Angeles service center – Quick turn pump cell

Sulzer is a global partner delivering reliable sustainable solutions for key applications. We offer repair and maintenance services from a single access point for turbines, compressors, pumps, generators and motors. By operating one of the largest service networks in the industry, we are close to our customers with more than 180 production and service locations worldwide. Projects are completed by a highly experienced staff of engineers, project managers, sales managers, and technicians combined with a crew of dedicated craftsman.

Quick turn resources and facilities

Sulzer's quick turn pump cell service center in Santa Fe Springs, California Service is designed to deliver standard process pump repairs within seven days and to ensure maximum efficiency to deliver quality repairs.

Benefit from our comprehensive service offering

- Seven day repair or less with engineering review
- Fixed price for a standard scope
- Customized quick turn pump repair of OEM quality

Quick turn pump repair workflow

- Received, disassembled and inspected
- Pressure washed
- Pictorial report and analysis is compiled
- Parts replaced with customer-supplied or pre-ordered parts and/or enhancements or upgrades
- Reassembled and mechanical seals are air-tested
- Painted, shipped and delivered within seven days

Service center equipment

- Full range of dynamic balancing up to 2'400 lbs. with 120" swing
- Horizontal boring mills machines to machine from 60" to 144"
- Vertical boring mills from 58" width swing to 44" height under rail
- Niles planner 120" x 44" table under head
- Horizontal 50 ton press
- Mills, drills, lathes and key seaters

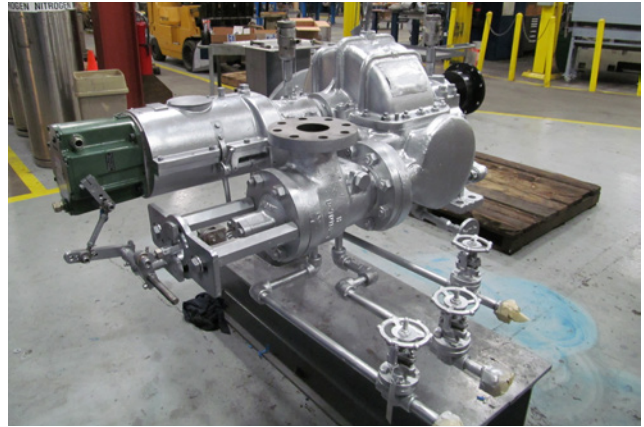


Comprehensive service offering

- Machine shop repair services (manufacture and repair)
- Welding services (buildup and fabrication)
- Reverse engineering with material, case, bearing housing, mechanical seal and impeller repairs and upgrades
- Qualified vendors in support of new and used parts
- Turnkey field services and field testing
- 24-hour emergency repair
- Full time second shift
- Balancing
- Hydro testing

About Sulzer

Sulzer provides cutting-edge services and solutions for rotating equipment dedicated to improving customers' processes and business performances. When pumps, turbines, compressors, generators, and motors are essential to operations, customers need a service partner they can trust. With our technically advanced and innovative solutions, we give our customers the assurance they need to focus on their operations. Customized solutions help to reduce maintenance time and cost. Our partners' business demands are ever increasing and changing but they can rely on our experts to provide the optimal solution to improve operational efficiency and reliability. We provide high-quality services at competitive prices and delivery times.



Sulzer Pump Services (US) Inc.
Los Angeles Service Center
9856 Jordan Circle
Santa Fe Springs, CA 90670
Phone +1 562 903 1000

www.sulzer.com

E00382 en 11.2020, Copyright © Sulzer Ltd 2020

This brochure is a general product presentation. It does not provide any warranty or guarantee of any kind. Please, contact us for a description of the warranties and guarantees offered with our products. Directions for use and safety will be given separately. All information herein is subject to change without notice.