

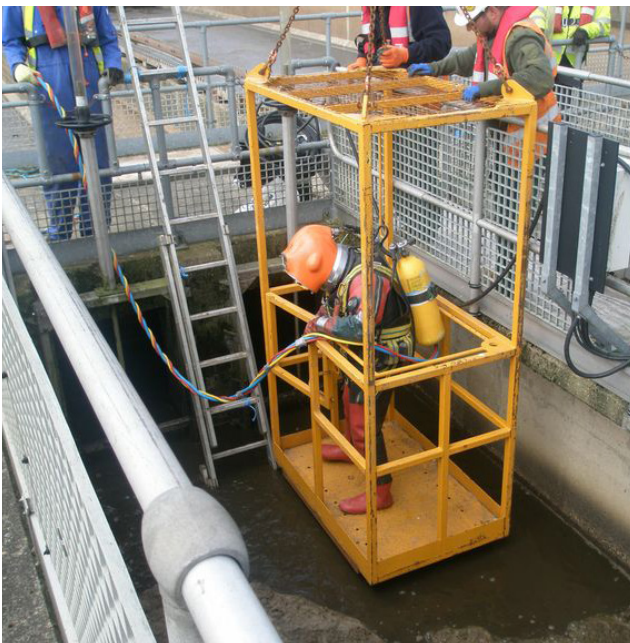
Proven energy savings with new mixer technology

The existing installed mixers at the Anglian Water-owned Cotton Valley Sewage Treatment Works (STW) were replaced with Sulzer submersible mixers type ABS XRW and now deliver significant energy savings. A trial and subsequent analysis showed that a reduction of the energy consumption by 38% could be achieved.



The new mixers have delivered over and above the estimated energy savings, which is a fantastic result. We are exploring the opportunity to install new mixers at various other sites to help lower the operational carbon emissions.

Senior Energy Manager at Anglian Water



The mixers were installed with minimum disruption to the plant by divers in cages, with no need to drain the aeration lanes.

The challenge

There were four aeration lanes with 12 fixed speed mixers operating 22 to 23 hours per day. Several mixers were not operating due to installation problems and mixer failure. The mixers were not energy efficient due to the fixed drives.

The Sulzer technical team surveyed the site and found that new shock absorbers and lifting handles needed to be provided for the new installation.

The solution

Twelve Sulzer submersible mixers type ABS XRW with variable speed drives were installed at the Cotton Valley STW. A local workshop manufactured new shock absorbers/lifting handles which were fitted to the new mixers. Specialist divers were employed to complete the installation.

Customer benefit

The new Sulzer submersible mixers type ABS XRW have their own variable speed drive, which is an integrated part of the mixer, and its control was installed in the existing control room. Therefore the mixers can be run at an optimized speed in order to obtain consistent mixing.

The Senior Energy Manager for Anglian Water states that the new mixers have delivered over and above the estimated energy savings with an almost 40% reduction of the annual costs and a 1.8 years payback time on the equipment. They believe this is a fantastic result. They are now exploring the opportunity to install new mixers at various other sites to help them lower their operational carbon emissions.



Sulzer submersible mixer type ABS XRW

System data

Motor	X 55/24	X 75/24	X 100/24
Rated power (kW)	5.5	7.5	10.0
Motor efficiency (%)	94.8	93.8	94.0
Variable Frequency Drive (VFD)	A	B	C
Rated power (kW)	5.5	7.5	11.0
Rated current at 400 V (A)	9.7	12.9	17.8
Total system efficiency (%)	90.2	90.3	91.0

For more information on our products and solutions for wastewater treatment, please visit sulzer.com.

Contact

joelle.rabelle@sulzer.com

www.sulzer.com

A10095 en 8.2020, Copyright © Sulzer Ltd 2020

This study is a general product presentation. It does not provide a warranty or guarantee of any kind. Please contact us for a description of the warranties and guarantees offered with our products. Directions for use and safety will be given separately. All information herein is subject to change without notice.