

## Fixed valve trays

---

# Take advantage of our fixed valve tray technology

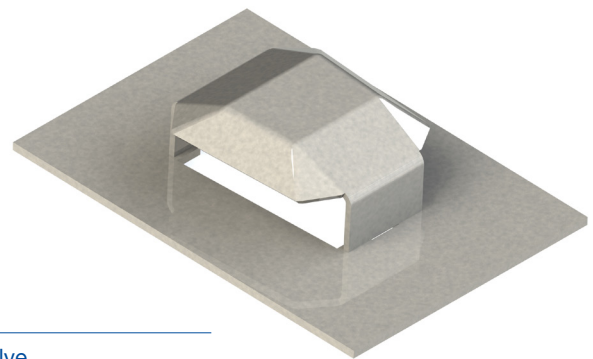
---

UFM AF™ is an enhanced valve part of the UFMPlus family, developed for fouling service.

UFM AF is a large size valve which provides excellent anti-fouling features on the tray:

- Modified outlet weirs: stepped or sloped.
- Push Valves

UFM AF is a premium anti-fouling valve with very high efficient capacity. Enhanced downcomers can be applied to UFM AF trays for even higher capacity, if required.



---

**How can we help you?**  
**Contact us today to find your best solution.**

[sulzer.com](https://www.sulzer.com)

---

---

UFM AF™ valve  
The latest addition to our fixed valve portfolio.

E10901 en 3.2024, Copyright © Sulzer Ltd 2024

This brochure is a general product presentation. It does not provide a warranty or guarantee of any kind. Please contact us for a description of the warranties and guarantees offered with our products. Directions for use and safety will be given separately. All information herein is subject to change without notice.

---