

Field machining services

Turnkey on-site support for turbomachinery

Sulzer's field machining service provides versatile on-site support with milling, flange facing, drilling, welding and bore machining all available. We deliver quality machining services, foundations and grout work and baseplate installations. Whether in an emergency, as part of planned maintenance or an entirely new build – we have the right solutions for any situation.

Flexibility

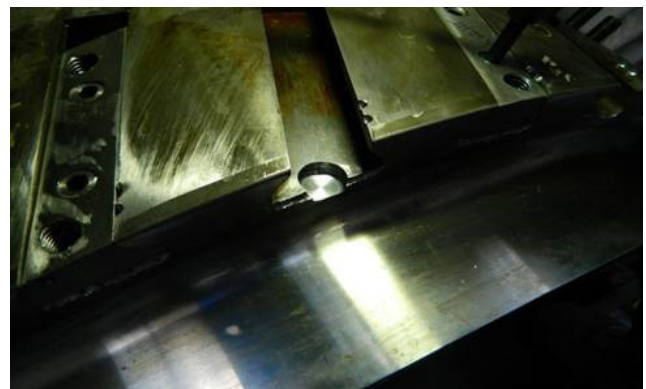
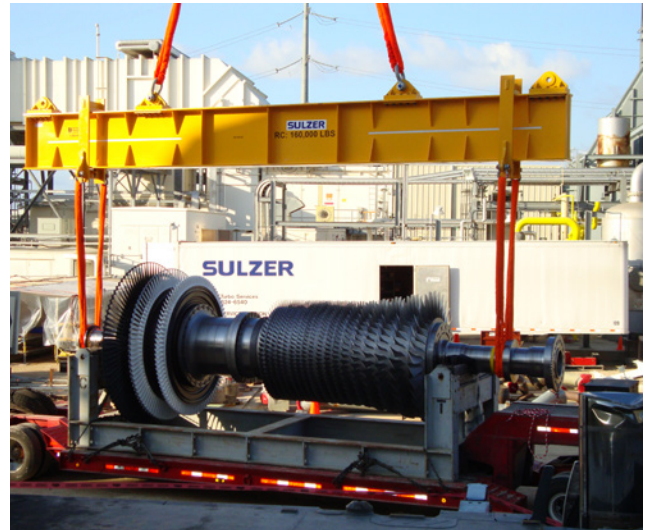
Our field machining service is highly flexible, ensuring that the needs of turbines, pumps, compressors and gearboxes are met. We have extensive experience working in a wide range of industries including the power generation, chemical, as well as oil and gas sectors. Furthermore, we integrate seamlessly with any project. Our capabilities extend to developing customized machining equipment for challenging projects. This adaptability ensures we can maximize your equipment uptime.

Quality

State-of-the-art equipment operated by highly experienced machinists means we offer exceptional quality. Using high precision instrumentation, we can ensure the accuracy of machining work or alignment to the highest tolerances. This focus on quality means we are a preferred service provider for critical turbine, pump, gearbox and compressor installations.

Foundations and baseplates

As part of our turnkey service, we also deliver laser levelled equipment soleplates and baseplates. We regularly install bases to support pumps, turbines, compressors and gearboxes in critical petroleum, chemical, pipeline and power applications.



Equipment

Boring bars

- Climax BB5000 2¼ inch OD x 4', 6' & 8' electric driven boring bars
- Climax BB6100 3½ inch OD x 12 ft long hydraulic driven boring bar
- Climax BB7100 5 inch OD x 12 ft long hydraulic driven boring bar

Drilling

- Lamina hydraulic mag base drill
- CS Unitec MAB 1300 electric mag base drills
- Milwaukee electric mag base drills

Flange facers

- Climax FF6200 OD and ID mounted
- Climax FF5000 & FF4000 ID mounted

Lasers

- Centralign Ultra Expert
- Levalign Expert
- Pruftechnik Rotalign Ultra II
- Shaft alignment, level and flatness, straightness and bore alignment

Milling

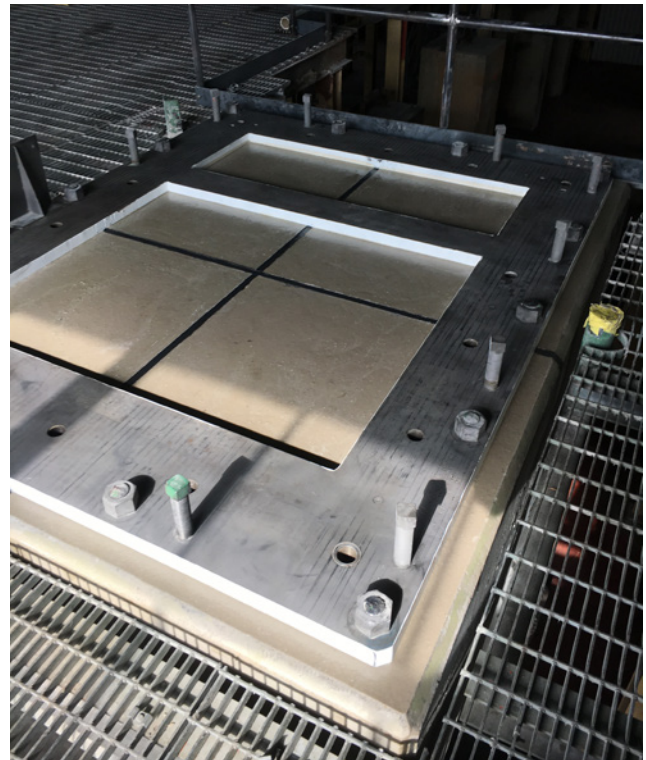
- Climax LM6000 linear hydraulic driven mill
- Climax LM6200 Linear/Gantry hydraulic driven mill
- Climax PM4200 Linear electric driven mill
- Custom designed equipment

Welding

- Boretech automatic orbital welder, OD or ID welding
- Miller diesel 600 A welder
- Miller electric 400 A welder and 150 A suitcase welder

Miscellaneous

- Slides and compounds to machine shaft journals, journal grinding
- Small milling machine mounted on small slides



Sulzer Turbo Services New Orleans Inc.
1516 Engineers Road
70037 Belle Chasse, Louisiana
USA
Phone +1 504 392 1800

www.sulzer.com

E10746 en 6.2021, Copyright © Sulzer Ltd 2021

This brochure is a general product presentation. It does not provide any warranty or guarantee of any kind. Please, contact us for a description of the warranties and guarantees offered with our products. Directions for use and safety will be given separately. All information herein is subject to change without notice.